

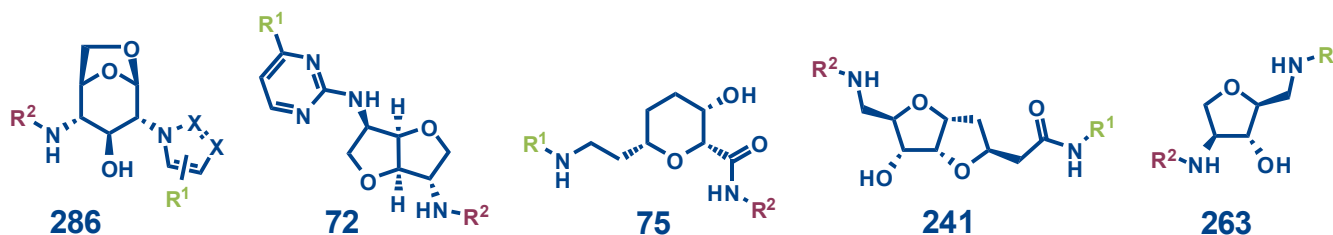


## NATx Carbohydrates

Sweeties from the sugar box!

**Carbohydrates** are a NP class with unique structural features requiring special skills and dedication for derivatization. The reward is an assortment of unusual libraries that conserve the unique sugar like features, combined with outstanding three dimensionality and an exceptional Fsp3 profile.

**5,419** compounds from our library originating from 14 diverse scaffolds are populating the AnalytiCon **carbohydrate** like space. All compounds can be cherry picked. Customized sets can be assembled and delivered in your preferred format. All compounds are above 85 percent purity.



**AnalytiCon**  
discovery

**The Natural Product Company**  
[www.ac-discovery.com](http://www.ac-discovery.com)

AnalytiCon Discovery GmbH  
Hermannswerder Haus 17  
14473 Potsdam | Germany

Phone: +49 (0)331 2300 - 300  
Fax: +49 (0)331 2300 - 333  
Email: [info@ac-discovery.com](mailto:info@ac-discovery.com)

AnalytiCon Discovery, LLC  
9601 Medical Center Drive  
Rockville, MD 20850-3303 | USA

Phone: +1 240 406 1256  
Fax: +1 301 294 7010  
Email: [us-info@ac-discovery.com](mailto:us-info@ac-discovery.com)